

WISCONSIN HOMES

Floor Plan Catalog



Custom Design. Precision Built.







WISCONSIN HOMES is a **DREAM FACTORY.**



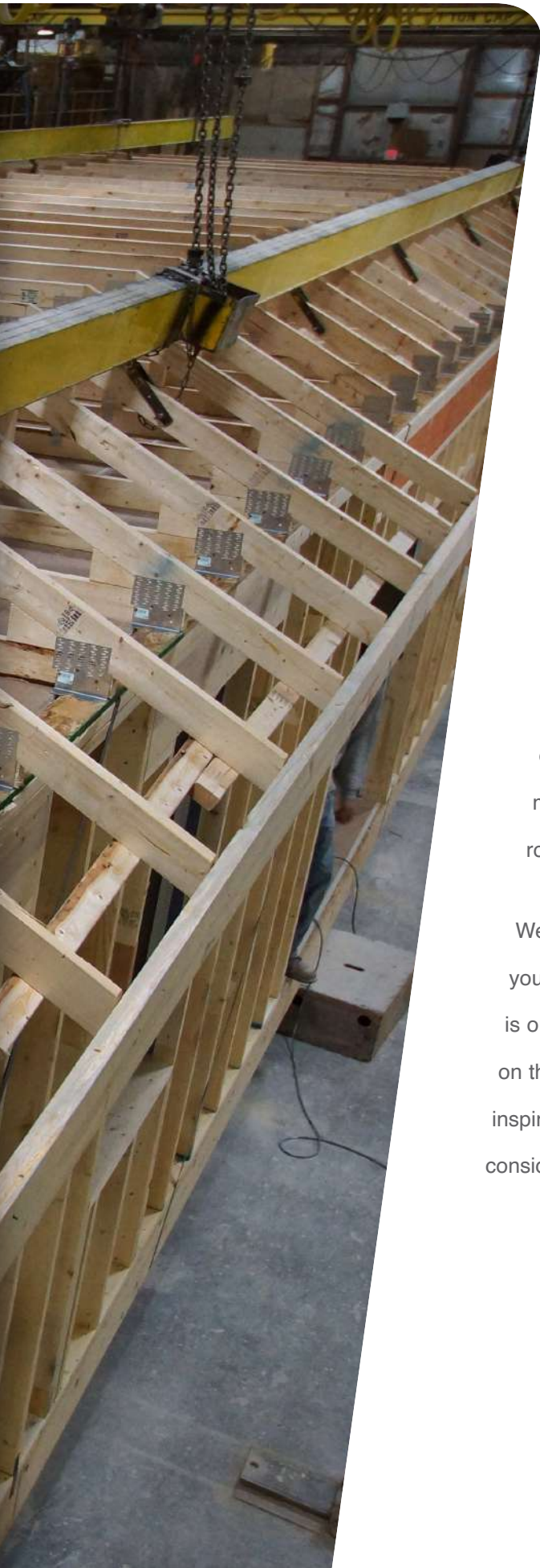
We are skilled engineers, designers, and craftsmen—all committed to the goal of realizing what you see in your mind's eye: your dream home.

We believe a home is an extension of you and your personality, and as such it should express your personality and fulfill your needs and desires. At Wisconsin Homes we are dedicated to the art of personalized home construction. With a tradition of quality and innovation spanning more than a half-century, our customers can expect the highest standards for design options and construction techniques. We take great pride in our reputation for finding inventive and elegant solutions to accommodate your desires for your living space.

It's important to us that your home is everything that is important to you. We want it to be someplace where you will feel comfortable day after day, and something you will be proud of year after year. Custom designed and precision built...because that's your dream.







A PHILOSOPHY UPON WHICH TO BUILD.



Building a home should be exciting. It should be enjoyable. It should be satisfying. To this end, we strive to deliver a home that has been designed to your personal needs and constructed to your expectations of quality.

Building a home is the last place to take shortcuts. No one desires or deserves a home that is anything less than a product of premium materials and expert craftsmanship. When Wisconsin Homes builds your roof under our roof, that's exactly what we deliver.

We believe that you, the customer, should dictate how much involvement you will have in the process of designing and building your new home. It is our job to enhance your vision and facilitate your journey. What you see on these pages is a starting point, a collection of designs and floor plans to inspire and ignite your imagination. We invite you to explore the possibilities, consider your dreams—and build.



RANCHES



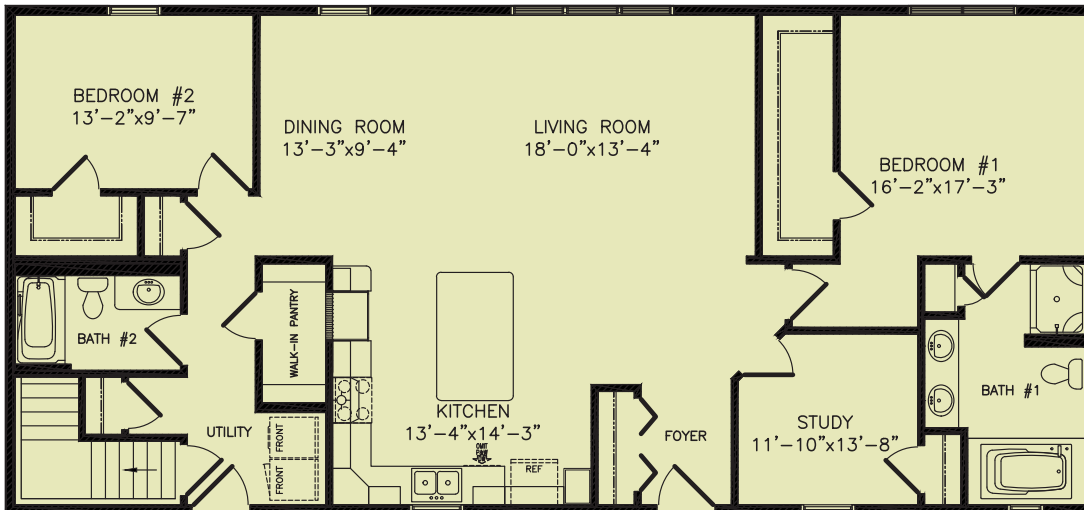


#2350

1680 SQ FT

28x60 2BDRM BROOKDALE

The unique layout of this home combines several popular design concepts masterfully. The large kitchen/dining area is ideal for home cooking and makes entertaining fun. The extensive living room can easily accommodate large gatherings and the walk-through pantry has easy access from all the high-traffic areas of the home.



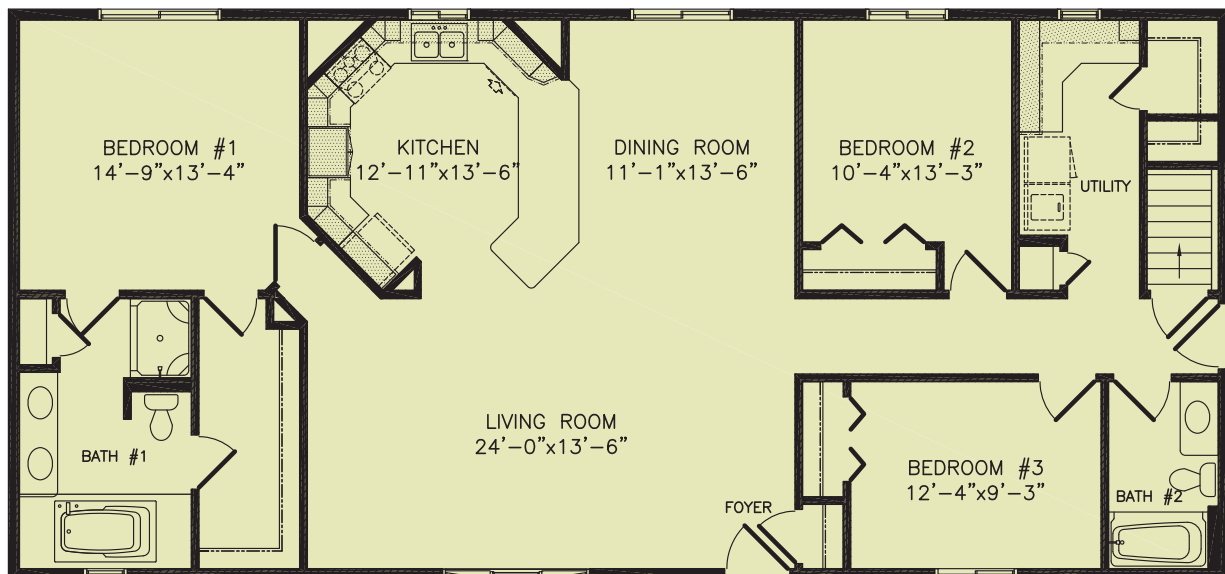


#2325

1680 SQ FT

28X60 3BDRM BROOKDALE

This comfortable three-bedroom, two-bath home is full of style and comfort. The distinctive kitchen design is incredibly functional and is detailed with a sizeable snack bar. Other popular amenities include a luxurious master bedroom/bath combination, a laundry room complete with a storage/folding area and an expansive living room.



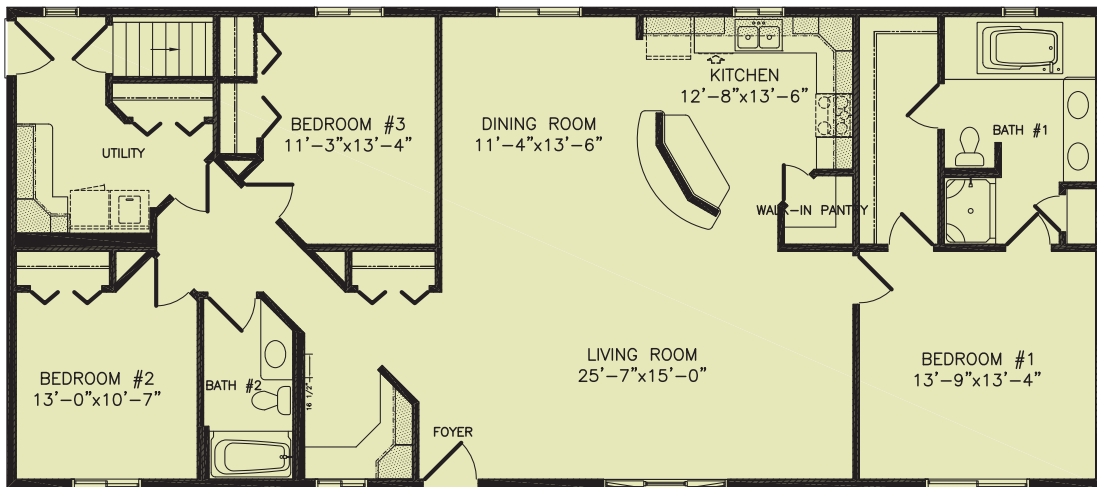
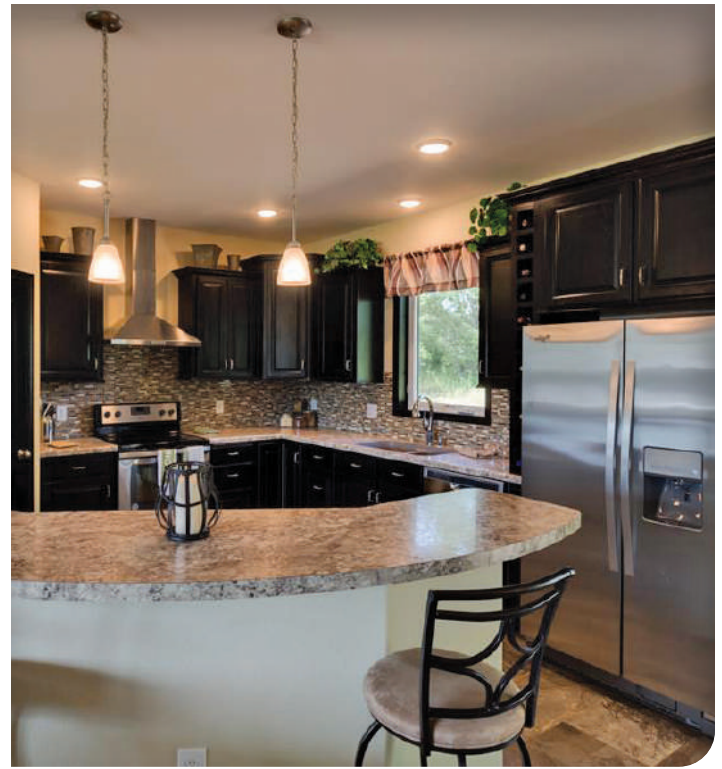
#2320

1792 SQ FT

28X64 3BDRM BROOKDALE

Flair and functionality are flawlessly fused together in awesome contemporary home. The main living areas are all open and non-restrictive. The master bedroom is accented with a large walk-in closet and private bath.

A cozy computer area is nestled near the secondary bedrooms and the sizable first floor laundry is conveniently located near the rear entry of the home.



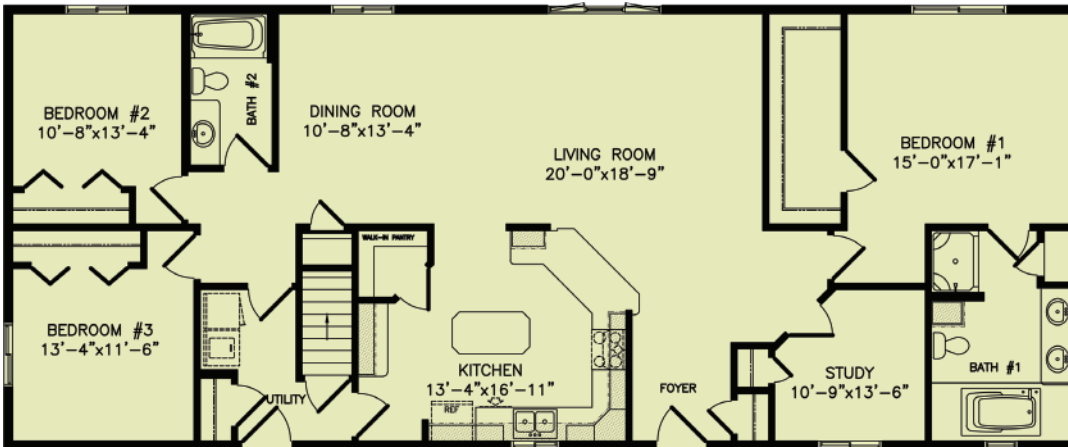


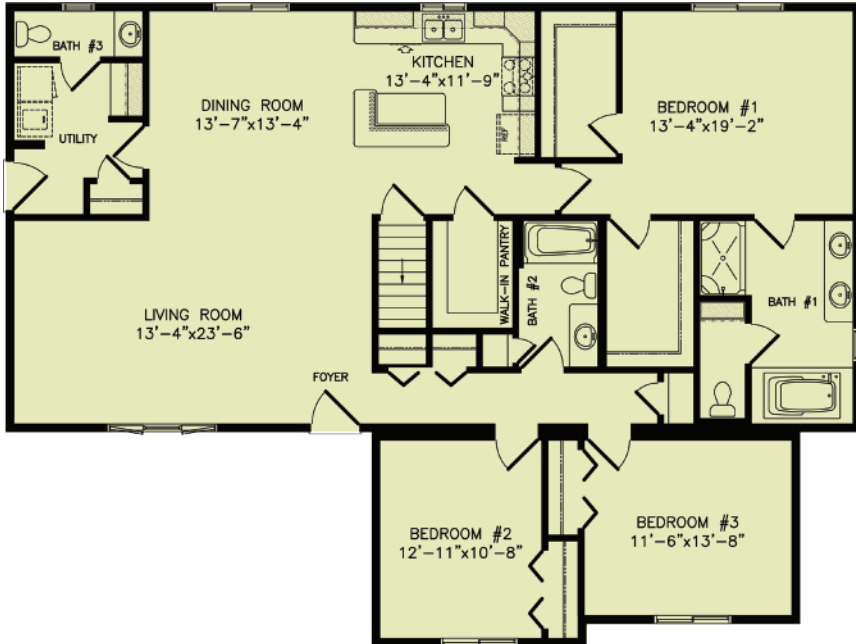
#1615

1904 SQ FT

28X68 3BDRM CAMBRIDGE

This gorgeous three bedroom home has a fabulous kitchen complete with amenities such as a large working island, snack bar, built-in desk area and handsome walk-in pantry. The front foyer opens into a large living area and is adjacent to a comfortable, private study. The master bedroom is accented with a spacious walk-in closet and elegant private master bath.





#3680

1940 SQ FT

42X56 3BDRM SPECTRUM

This three bedroom, two and one-half bath home features a spacious master bedroom with his/ hers walk-in closets and a luxurious private bath. The kitchen is accented with a large walk-in pantry and an expansive snack bar. Complimented with a comfortable living area, first floor laundry and an abundance of storage space, this home is an excellent choice wherever you're building.

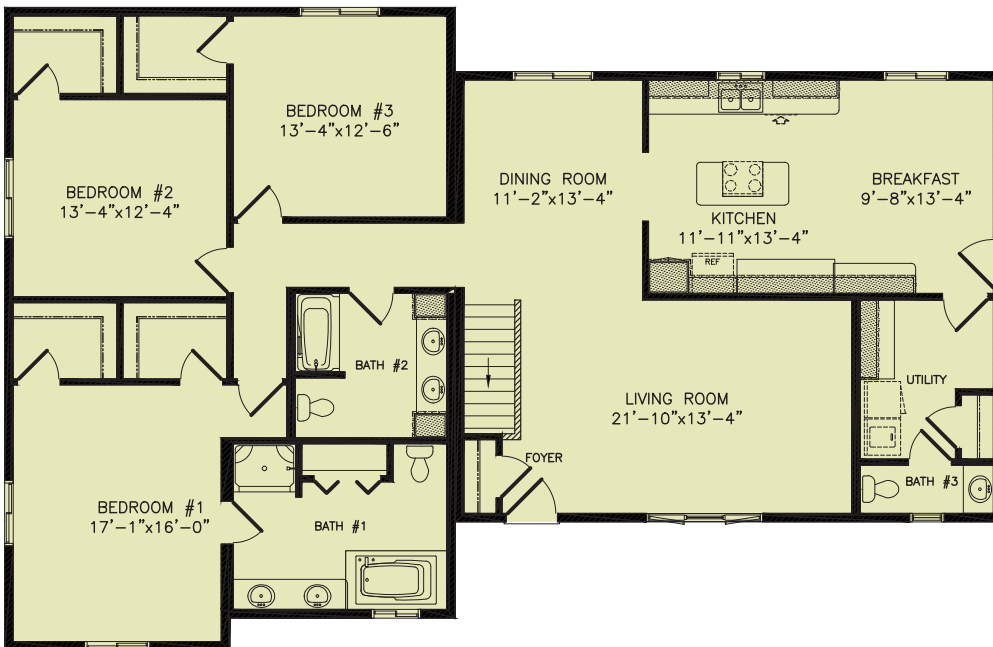


#4210

2046 SQ FT

40X52 3BDRM WESTBROOK

The Westbrook is pleasantly conducive to either an urban or a rural setting. Roominess flourishes throughout with the large front living room and expansive kitchen, which includes a workable island. All three bedrooms offer spacious walk-in closets and the lavish master bath is decked out with a separate shower and platform tub.



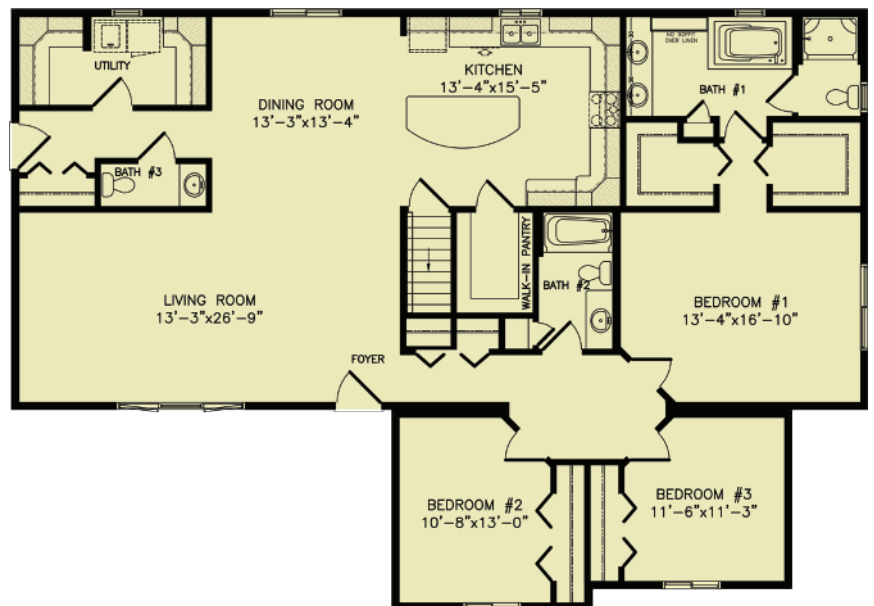


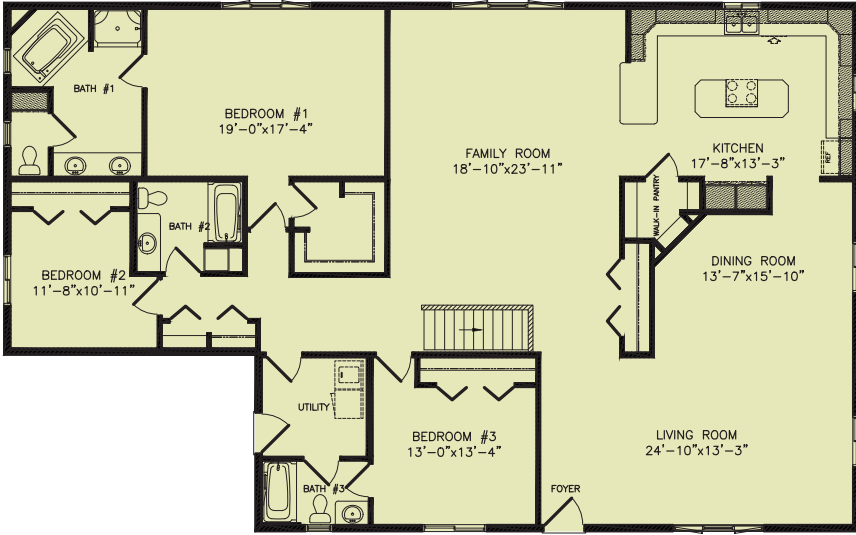
#3660

2052 SQ FT

42X60 3BDRM SPECTRUM

This spectacular home showcases three bedrooms, two and one-half baths and a deluxe laundry area. The roomy master bedroom includes two walk-in closets and a gorgeous private bath. The kitchen offers an abundance of cabinetry and a large walk-in pantry. The enormous living room puts the finishing touches on this terrific home.





#4820

2575 SQ FT

42X68 3BDRM WESTPORT

This ranch style home provides plenty of space for everyone. The front door leads to a foyer, which connects to both a large living room and a large family room. If you like to cook, the kitchen design provides a great deal of counter/cupboard space and offers a large center island range. For those who like privacy, each bedroom comes with access to a bathroom. A mudroom garage entry area completes this wonderful design.

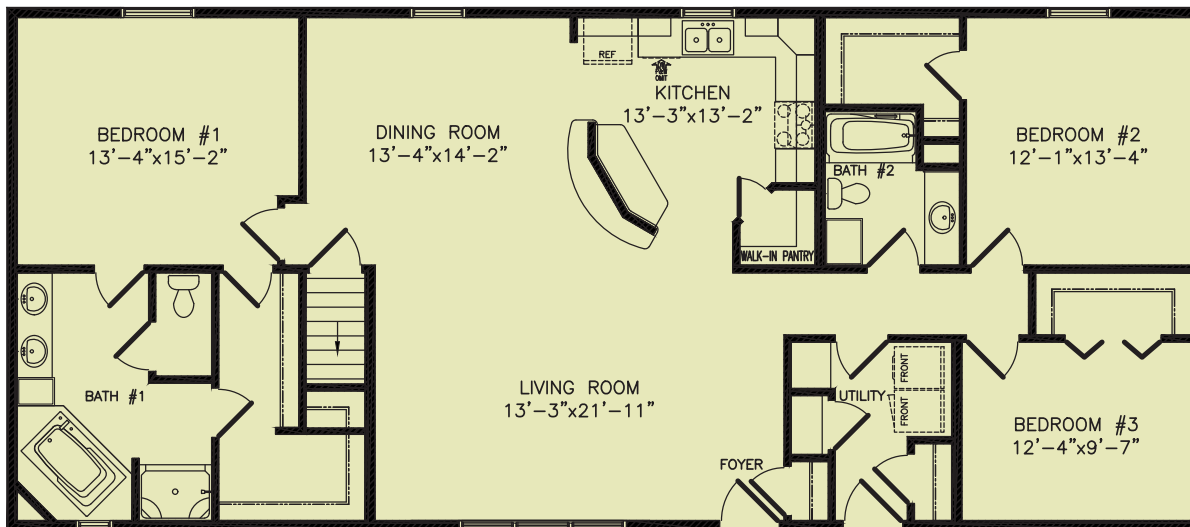


#2250

1792 SQ FT

28X64 3BDRM BROOKDALE

This highly popular model's grand kitchen offers enough cabinets and workspace to appeal to any "serious" cook, and has an extensive, angled snack bar that makes casual dining effortless. The master bedroom is positioned away from the secondary bedrooms for maximum privacy and it comes complete with a private bathroom walk-in closet. Plentiful closet/storage space adds the perfect finishing touches to this beautiful home.



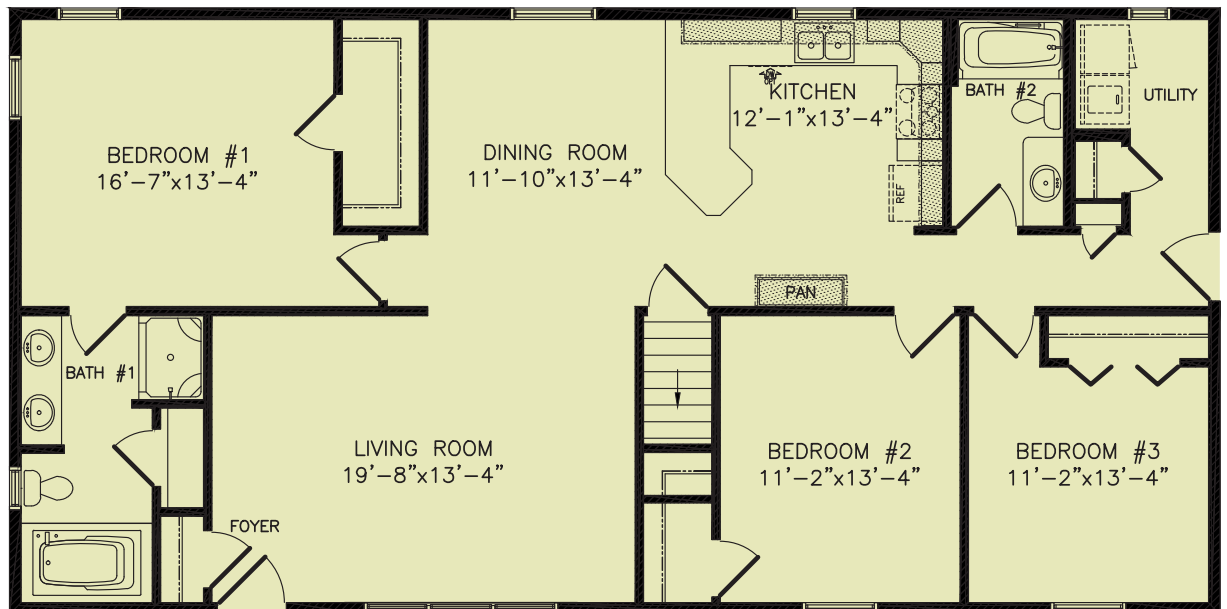


#5115

1568 SQ FT

28X56 3BDRM LIMITED II

The cozy three bedroom, two bath home showcases large, comfortable rooms and plenty of storage space throughout. The sizeable kitchen includes a fashionable snack bar and is adjacent to a very spacious dining room. The immense master bedroom suite is fitted with a large walk-in closet and a fabulous private bath that is accented with his/hers sinks and a relaxing soaker tub.



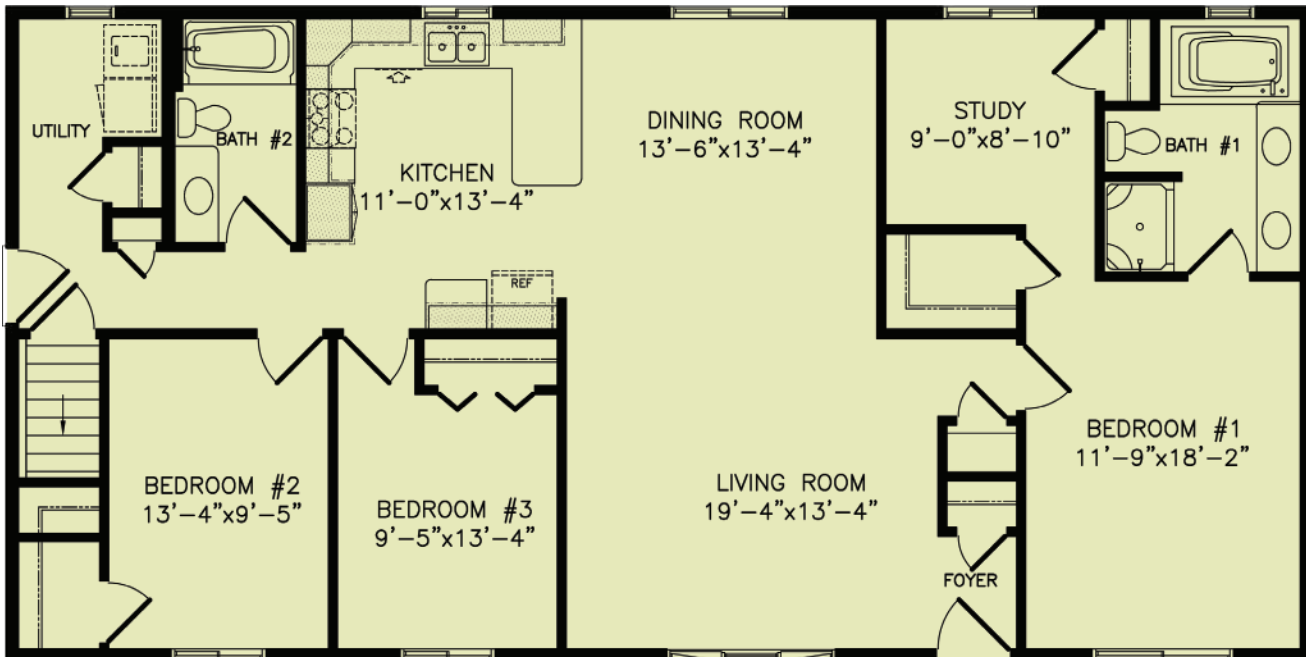


#2225

1568 SQ FT

28X56 3BDRM BROOKDALE

This wonderfully designed ranch home has the kitchen, living room and dining areas connected to utilize an open-concept architectural design. The master bedroom has a study attached for relaxation and privacy. Attached to the master bedroom is a walk-in closet and a bathroom complete with a soaker tub. For those muddy days a large laundry room is strategically located at the end of the home by the garage.



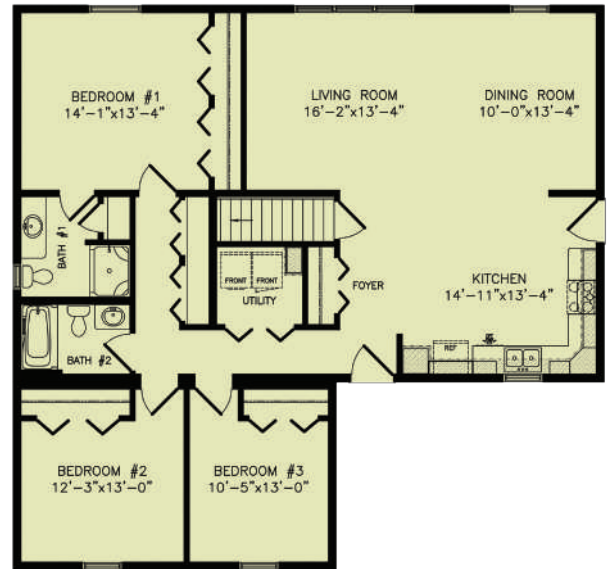


#3620

1569 SQ FT

42X44 3BDRM SPECTRUM

This ranch home is a beautiful, distinctive design with all the comforts of home. The spacious kitchen design can easily be used for classic family dinners while still having the ability to move to the large dining room for more formal times. Large bedrooms provide everyone with their own personal space. This home also offers extra storage space, centrally located laundry room and access to the basement from either entry door.



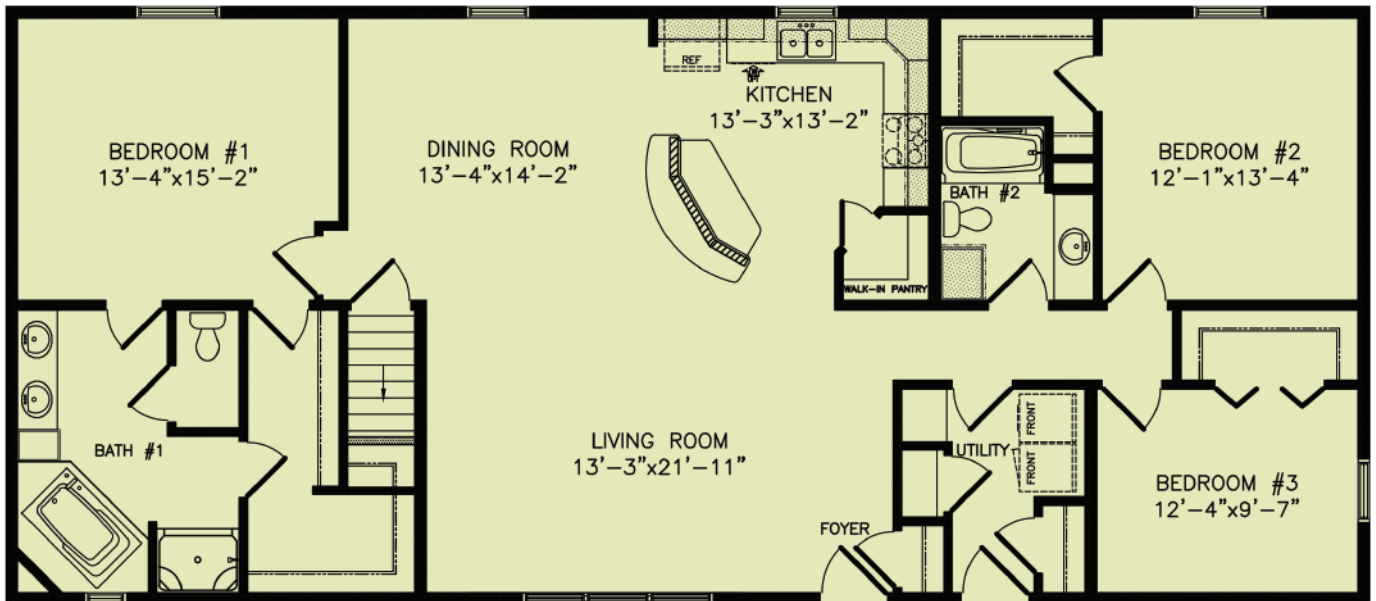


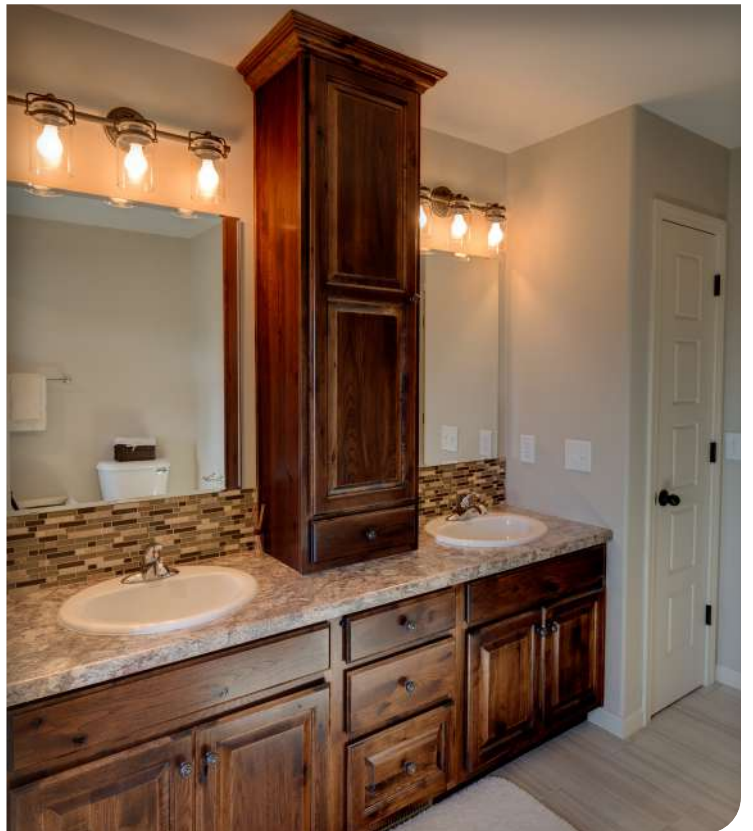
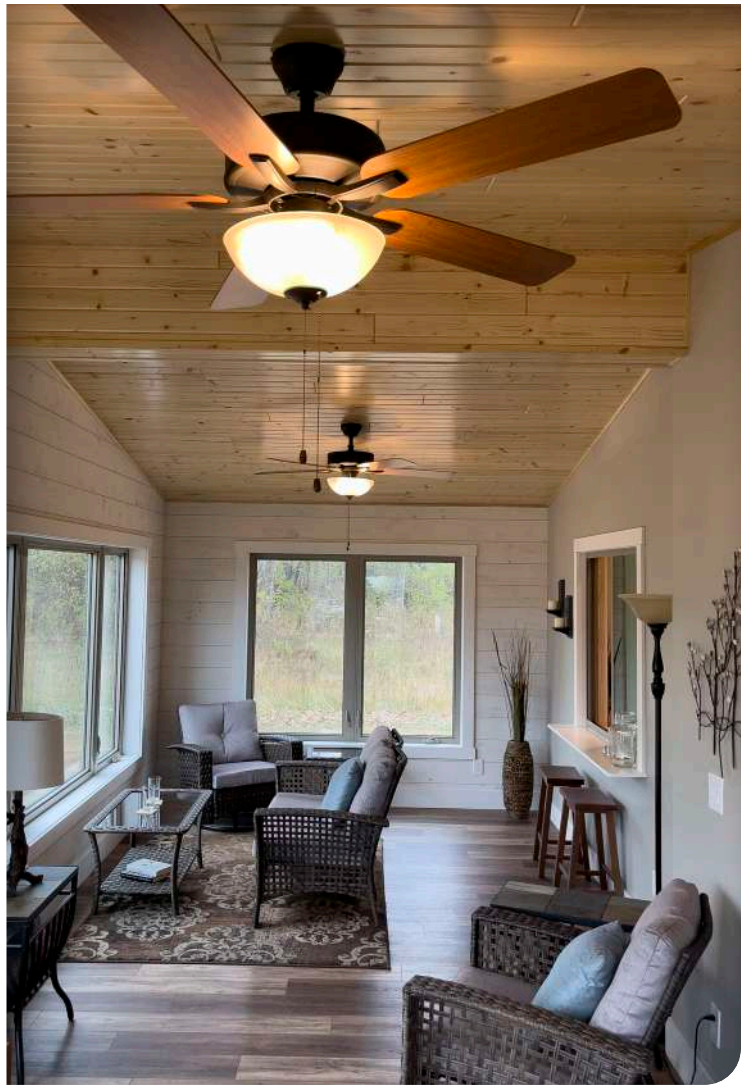
#2330

1792 SQ FT

28X64 3BDRM BROOKDALE

This contemporary design beautifully displays both space and comfort, from the welcoming, open living area to the luxurious master suite. Whether you invite the family over for a holiday get together or want to spoil yourself with some private time, this home accommodates your lifestyle. Other amenities include, unique raised snack bar, walk-in pantry and large closets in all bedrooms. This design is built with your family in mind.





COTTAGES & CHALETs



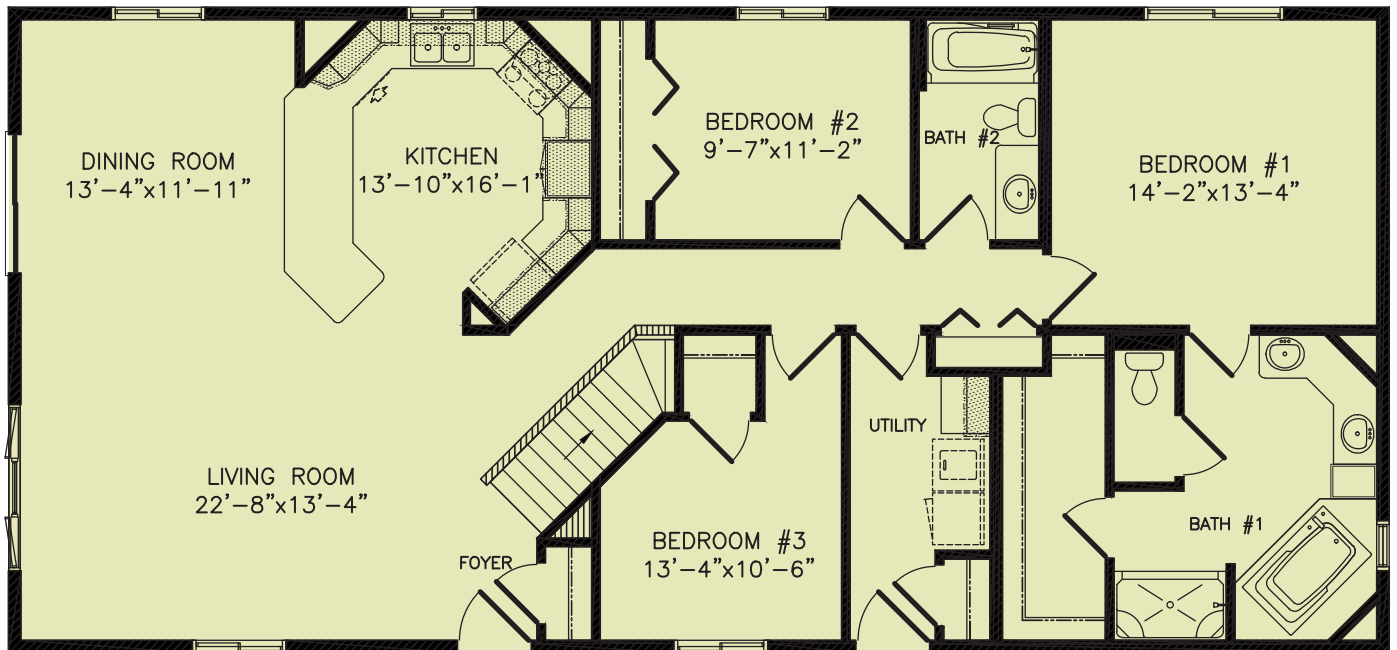


This country cottage home is packed full of dynamic appeal. The multi-faceted kitchen layout is accented perfectly with an angled stairway. The master bath provides all the amenities expected from a first-rate retreat. Complimenting this cozy cabin style home are spacious bedrooms, a main-floor laundry, plenty of storage and a large, open living area.

#2000

1680 SQ FT

28X60 3BDRM LAKEWOOD



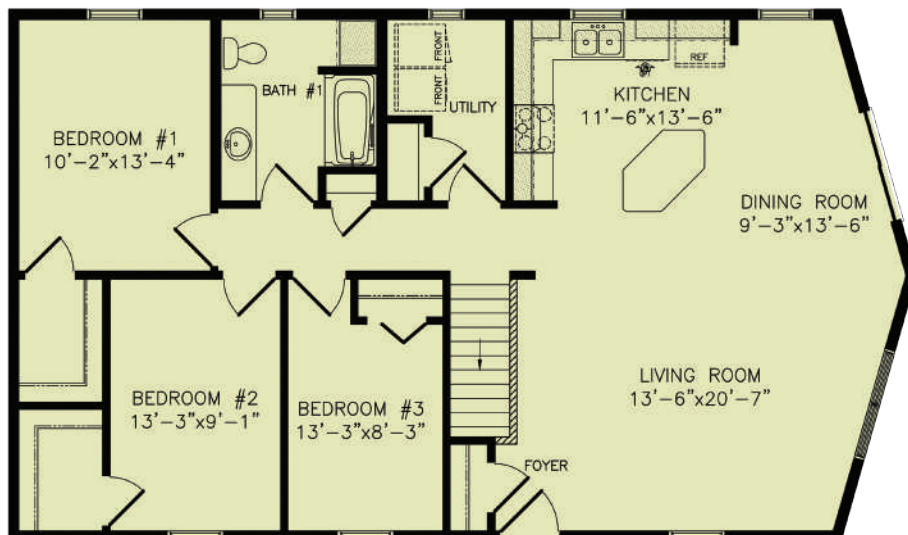


#1920

1288 SQ FT

28X48 3BDRM NORTHWOOD

It's time to relax and enjoy that view. This home design with the prow front lends itself to taking advantage of your view whether in the cook friendly kitchen or in the spacious living room with open stairway and dining room. This home also boasts a large kitchen island, spacious bathroom, large closets and a convenient main floor laundry room.



The Lakewood series is our most popular cottage model.

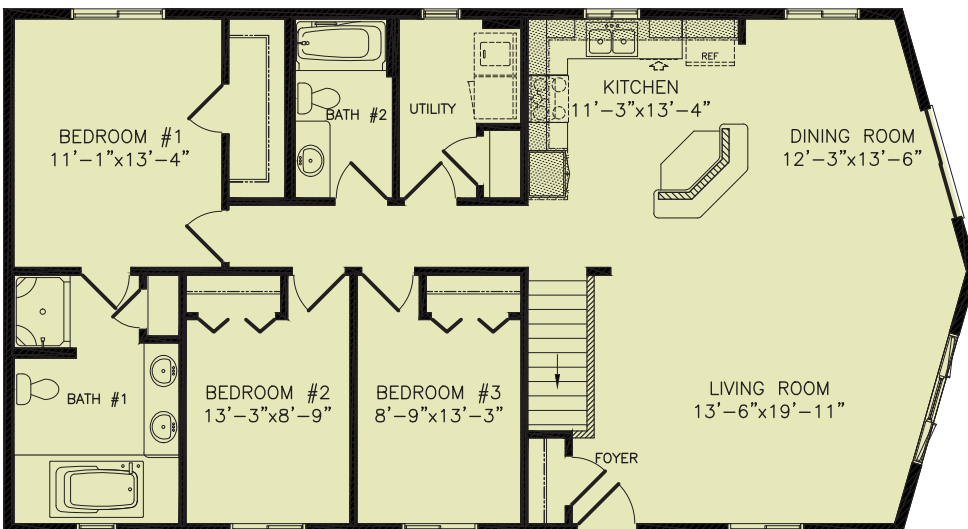
This layout is similar to our classic 2055 Lakewood with added emphasis placed on the master bedroom. The 153 square foot bedroom has a large walk-in closet. The master bathroom features double sinks, a stand-up shower and luxurious soaker tub. The front of the home is composed of an open living room, kitchen and dining room complete with a snack bar island great for entertaining.

The rest of the cottage is rounded off with a utility room and two bedrooms each with double closet doors.

#2025

1400 SQ FT

28X52 3BDRM LAKEWOOD

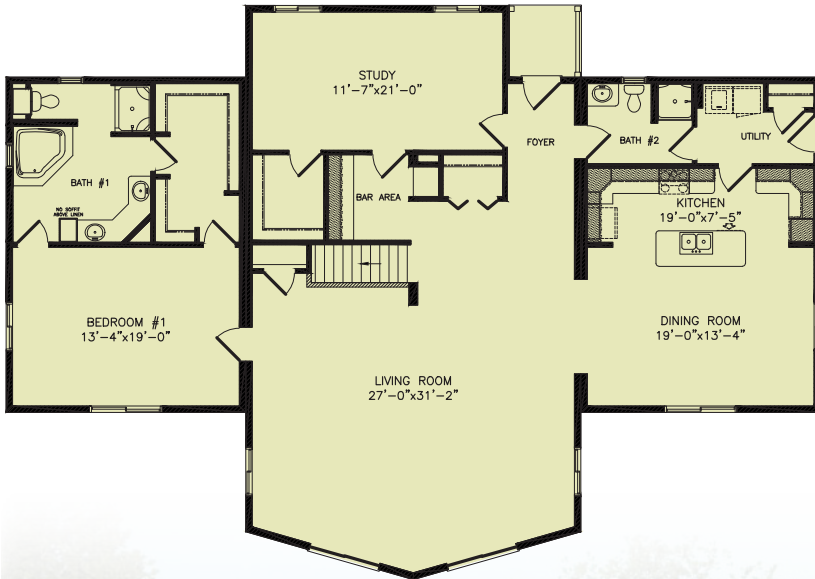


#2030

2377 SQ FT

48X68 1BDRM LAKEWOOD

This magnificent Lakewood home is perfect for everyday living or as a vacation paradise. The layout is similar to our 4750 Loft but as a ranch style home. This one bedroom home has an expansive master bathroom with a corner soaker tub and angled double sink vanity. The spacious study could be easily converted into a large second bedroom. You could get lost in two walk-in closets with wrap around shelving. The second bathroom has convenient access from both the utility room and foyer. Enjoy entertaining with your very own built-in bar located just off of the grand living room.



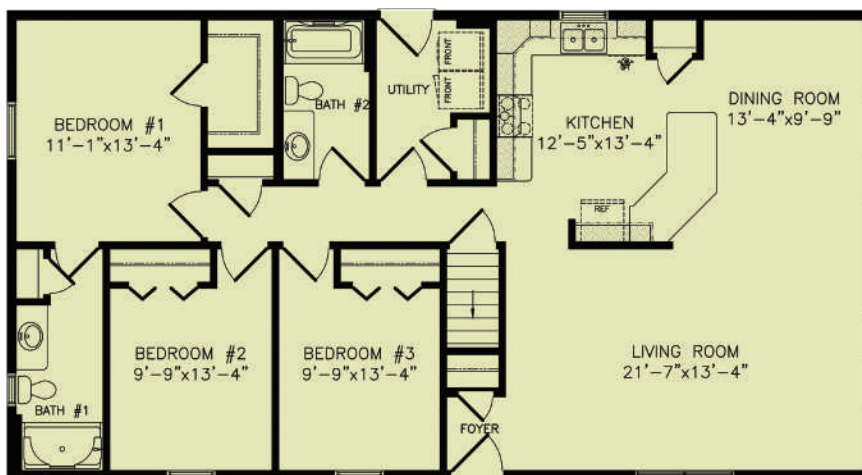


#1935

1456 SQ FT

28X52 3BDRM NORTHWOOD

This classic design has the essentials to provide your family with comfort and space through the years. Enjoy your morning coffee at the large snack bar or take it out on your deck through the included patio door. Get comfortable and spend some family time in the large living room. The rear entry is located to allow easy access to the kitchen, bathroom and the enclosed basement without tracking through the entire home.



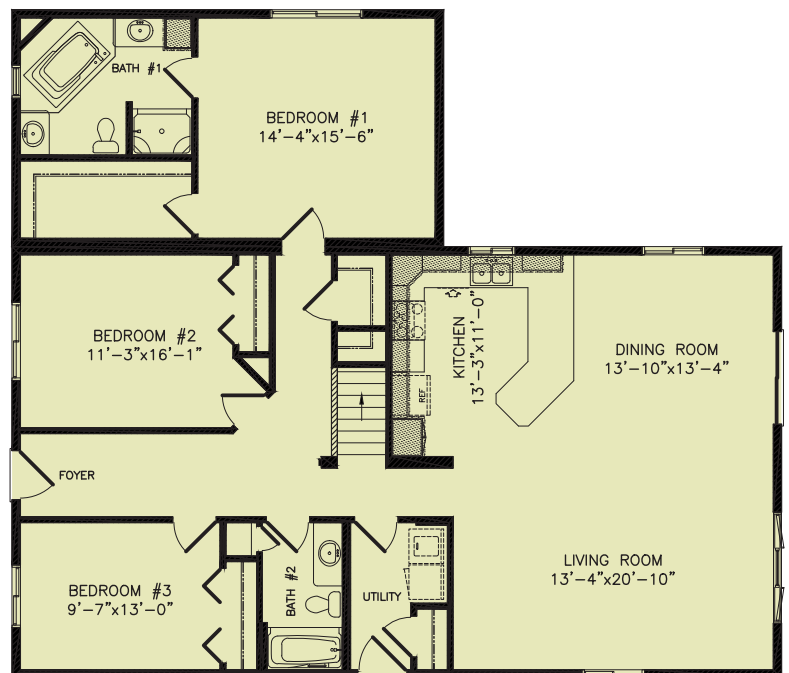


#2040

1830 SQ FT

44X50 3BDRM LAKEWOOD

This versatile cottage home is a great choice for any location. The large, open kitchen has a dynamite snack bar and is integral to the entire living area. The spacious master bedroom has a big walk-in closet and an amazing private bath. The main bath, basement stairs and utility area are all ideally located near the rear entry.

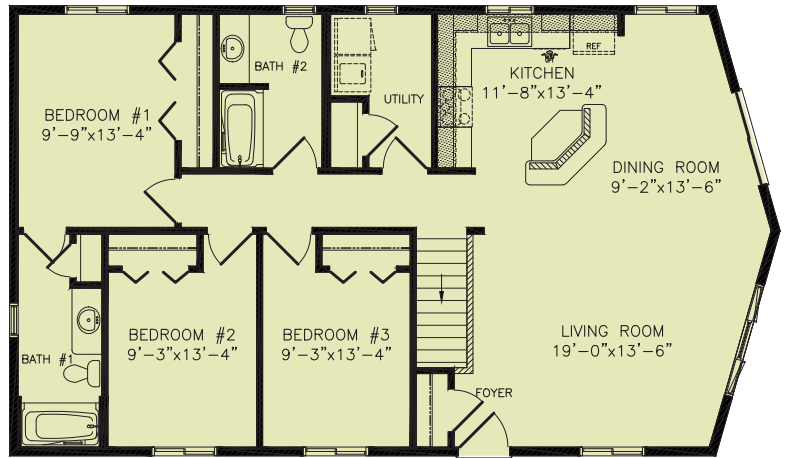


#2055

1288 SQ FT

28X48 3BDRM LAKEWOOD

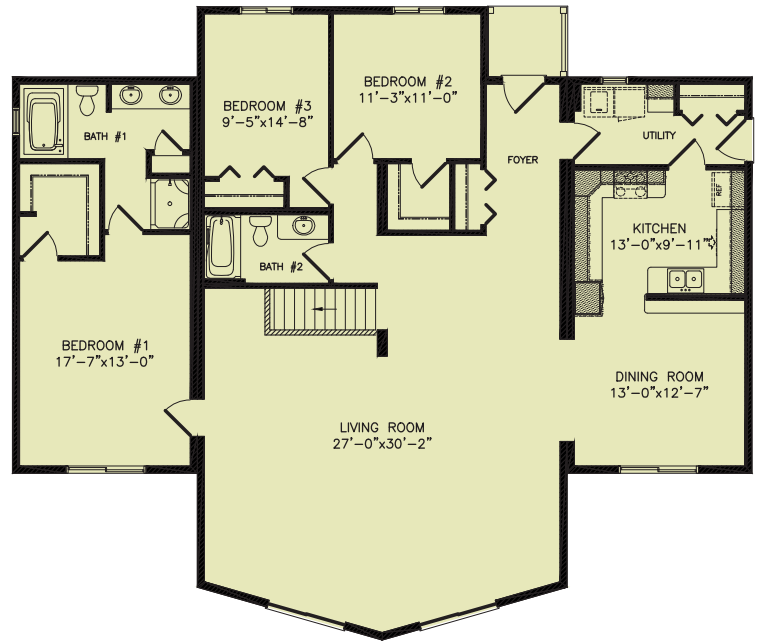
Join your family in a spacious living area where you can cook, dine, and relax together. Or wander through the patio doors to congregate on your covered deck. If it's privacy you crave, retreat into one of the three generous bedrooms, with spacious closets. You'll find quality amenities throughout-from oak cabinets to two full baths. The Lakewood's combination of practicality and charm is the right fit for you.



#2060

2099 SQ FT

56X48 3BDRM LAKEWOOD



This stunning Lakewood is a very similar layout to our 4760 Loft but as a three bedroom ranch style home. The expansive 215 square foot master bedroom includes a walk-in closet and a master bath complete with a soaker tub, stand-up shower and double sinks. Two generous bedrooms border a full bath conveniently located in the center of the home. The prow front in the living room adds a beautiful look inside and out.





#4710

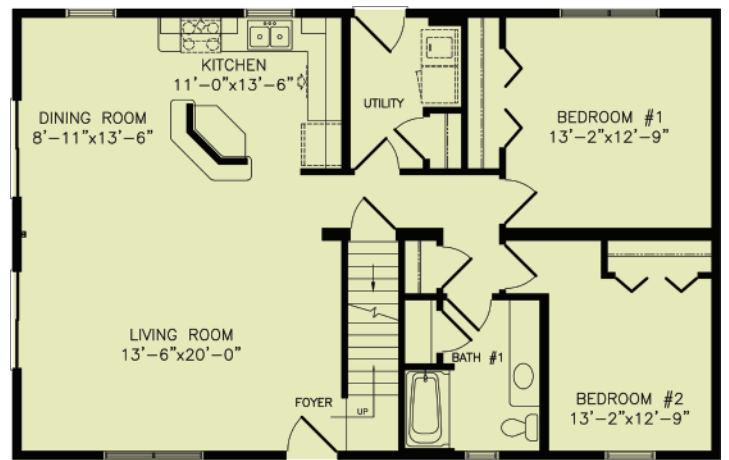
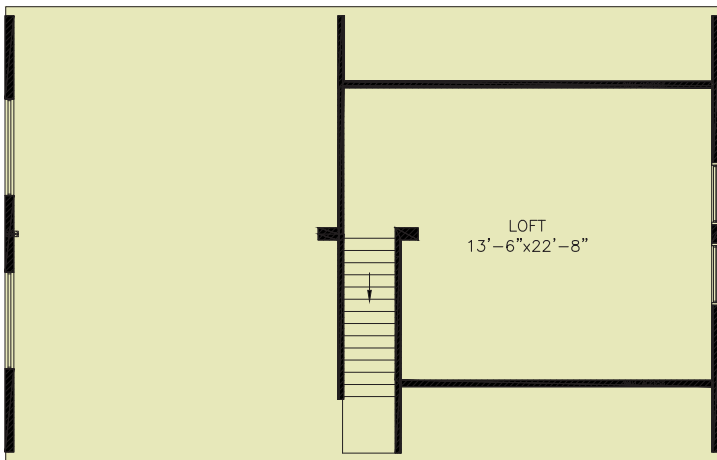
1641 SQ FT

28X44 2BDRM LOFT

Explore the flexible living space of the loft. A wall of light and windows creates a bright and airy feel accented by the cathedral ceiling. Two first floor bedrooms feature large closets. A full bath and large utility room are central and handy. Climb the stairs to a spacious loft that overlooks the kitchen, living, and dining areas. Built rock solid, and engineered for quality throughout. The loft is the haven you've dreamed about.

LIVABLE AREA
409 SQ FT

1232 SQ FT

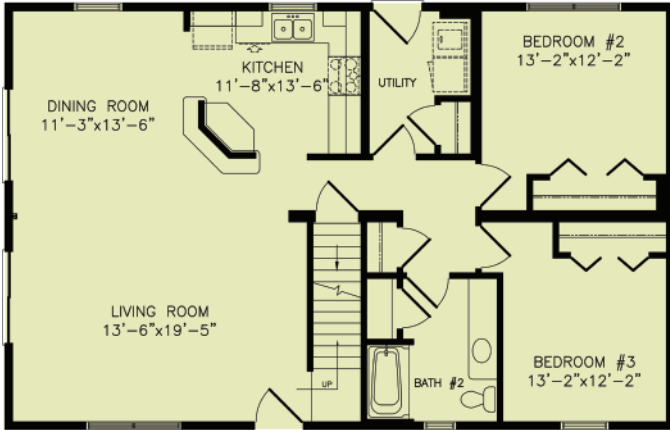


#4720

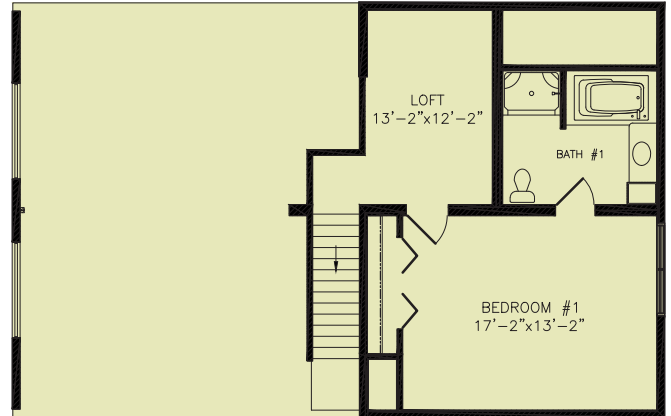
1778 SQ FT
28X44 3BDRM LOFT

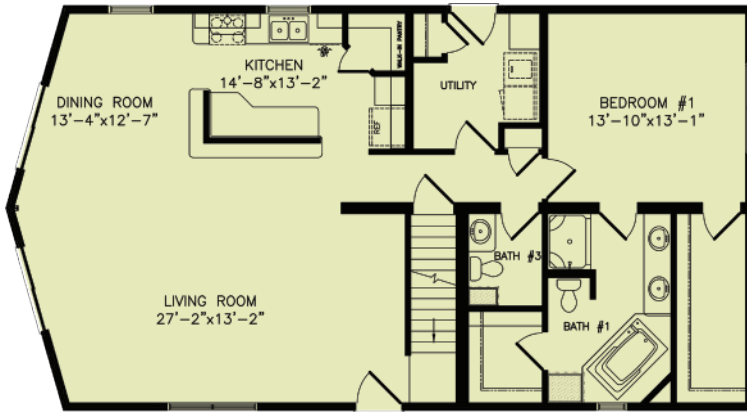
This home has the timeless design of our 4710 model but as a knee-wall style Loft. With its three bedrooms, two full baths and a main floor utility room, this home has all of the modern conveniences. The raised kitchen snack bar island overlooks a sizeable living and dining room. The vaulted ceiling in over half of the house adds a sense of distinction to this entire home.

1232 SQ FT



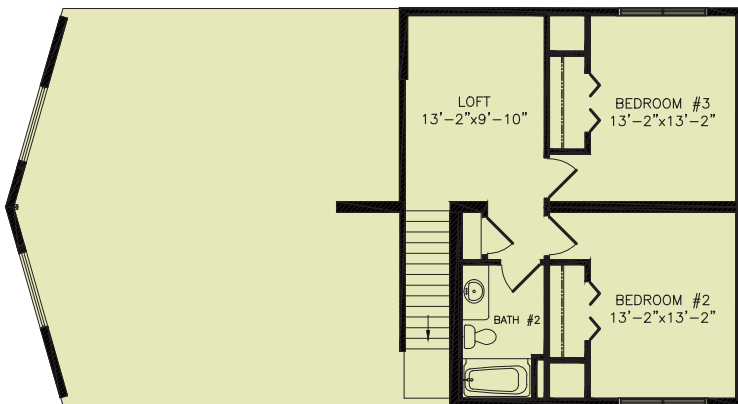
LIVABLE AREA
546 SQ FT





1400 SQ FT

LIVABLE AREA
627 SQ FT



#4725

2027 SQ FT

28X52 3BDRM LOFT

Comfort and elegance form a perfect balance in this awesome Loft home. The spacious living area is adjacent to a grand kitchen that boasts a large walk-in pantry, massive island and snack bar. The private master suite is neatly tucked into the rear of the main level and provides abundant storage and a luxurious soaker tub. The upper level includes two well-sized bedrooms, a full bath and a cozy, relaxing loft area. Complete with a convenient guest bath and large, functional laundry area on the main level, this home is flawless.

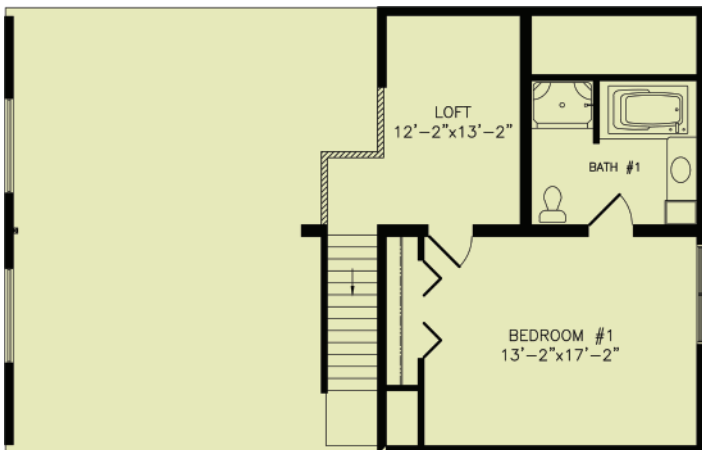


#4740

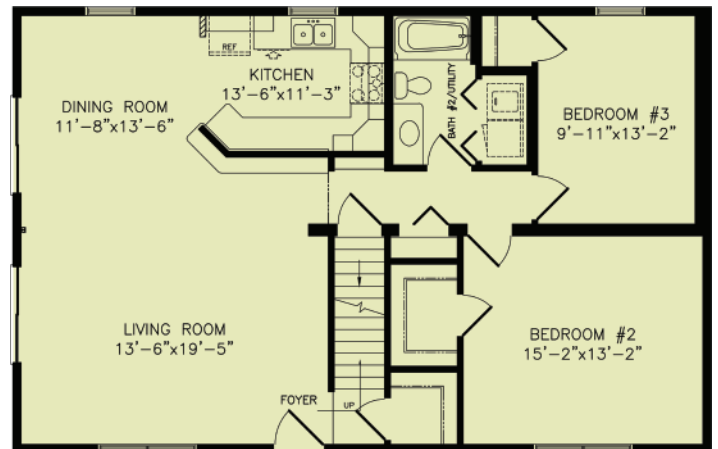
1783 SQ FT

28X44 3BDRM LOFT

Discover the satisfaction of living in a home as versatile as it is handsome. Unwind by the fire beneath the soaring cathedral ceiling, or gather in the modern kitchen adjoining living and dining areas. A full bath and utility room border two first floor bedrooms giving easy access to all. Climb the stairs to the flexible loft space, or retire to the master bedroom suite with its full bath and sunken tub. Come home to a new classic.



LIVABLE AREA
551 SQ FT



1232 SQ FT

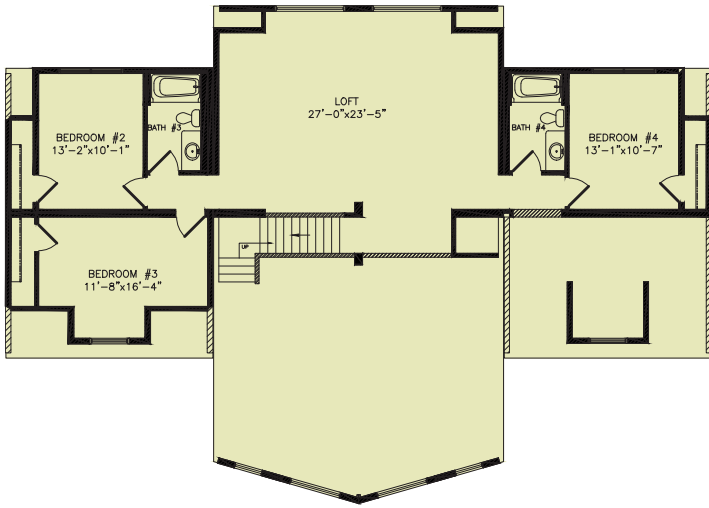
#4750

3664 SQ FT

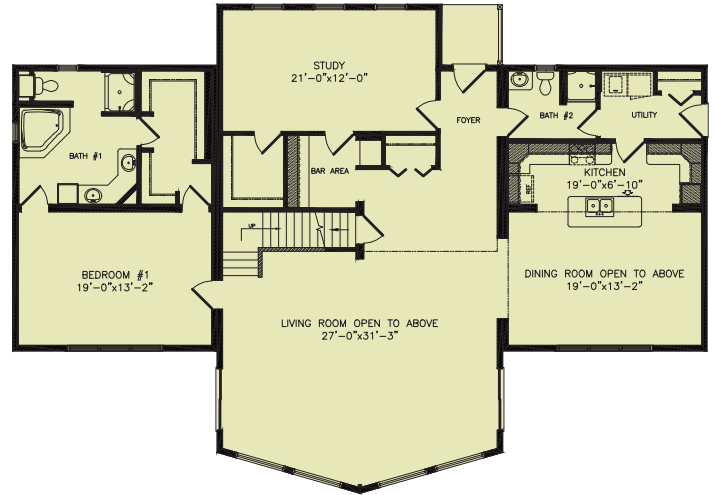
68X48 4BDRM LOFT

This loft is everyone's dream. With a front view that's nothing less than spectacular, this colossal 3,600+ sq. ft., 4 bedroom, 3.5 bath home offers an expansive and versatile study room, as well as a wet bar. The master bedroom suite consumes 560 sq. ft. alone and has a walk-in closet large enough for any lifestyle. The front walls are mostly glass to allow you to bring the outdoors in. Showcasing the great room is an optional gorgeous stone fireplace that extends to the peak of the upper level. Upstairs you'll find three bedrooms, two bathrooms and a large loft overlooking the great room. It's absolutely beautiful.

LIVABLE AREA
1287 SQ FT



2377 SQ FT



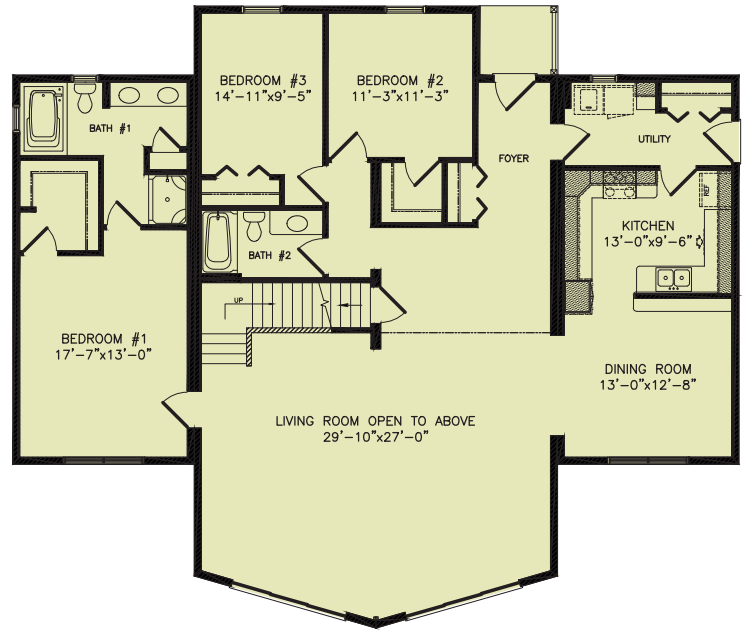


#4760

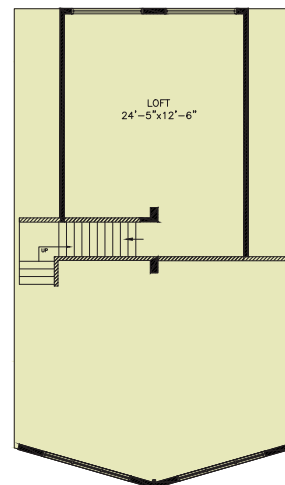
2573 SQ FT

56X48 3BDRM LOFT

This Loft provides three bedrooms downstairs with an extremely large loft area upstairs to be finished as you desire, leaving you plenty of space. The prow front in the great-room adds to the side wings for a beautiful exterior view when looking from the outside. Comfort is not compromised as the entire left wing contains a master bedroom with walk-in closet, a bathroom complete with double sinks, a stand-up shower and soaker tub. The right wing features a kitchen with plenty of counter and cabinet space, utility room and dining area. The front walls are mostly glass which allows you to bring the outdoors into a huge great-room. This home is gorgeous.



2130 SQ FT

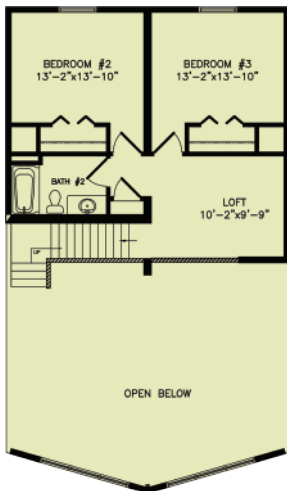


LIVABLE AREA
443 SQ FT

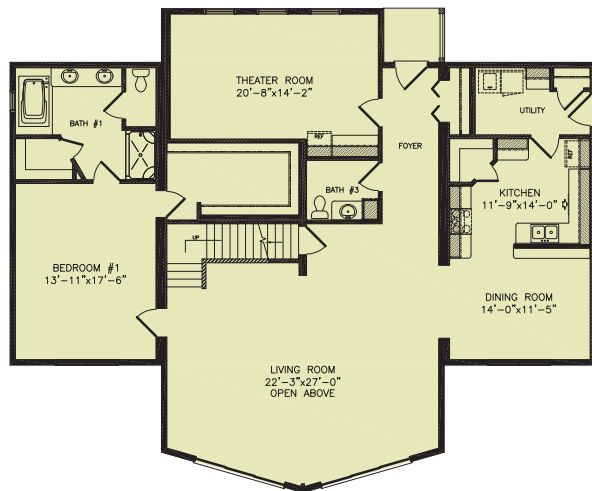
#4765

2753 SQ FT
56X48 3BDRM LOFT

This home will make you feel like royalty. The master bedroom is close to 250 square feet of luxury living. The main floor theater room is even more expansive and boasts a built in bar. Ample storage space accompanies this home with its walk-in corner pantry, walk-in linen and a huge walk-in master bedroom closet. Two more bedrooms and a loft overlooking the living room are waiting upstairs for you. Enjoy coming home to sheer elegance.



LIVABLE AREA
594 SQ FT



2159 SQ FT

MULTI-STORY



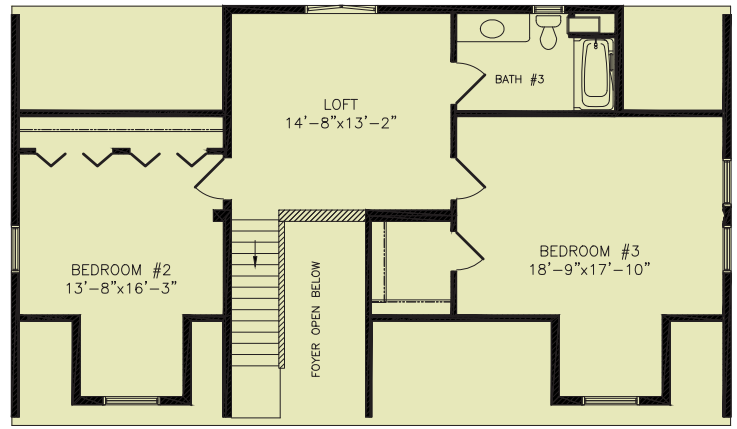


#3570

2231 SQ FT
28X48 3BDRM TELMARK

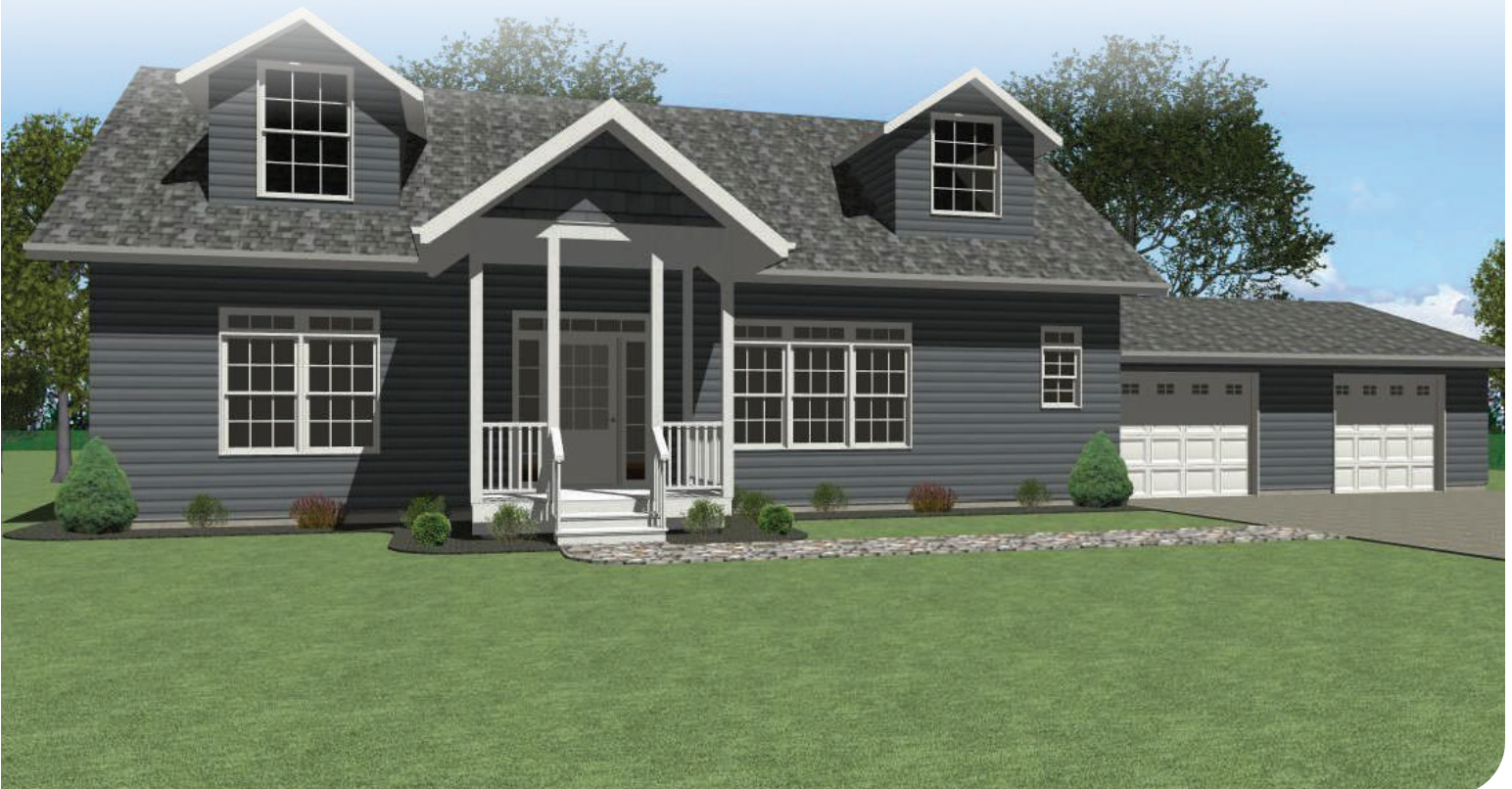
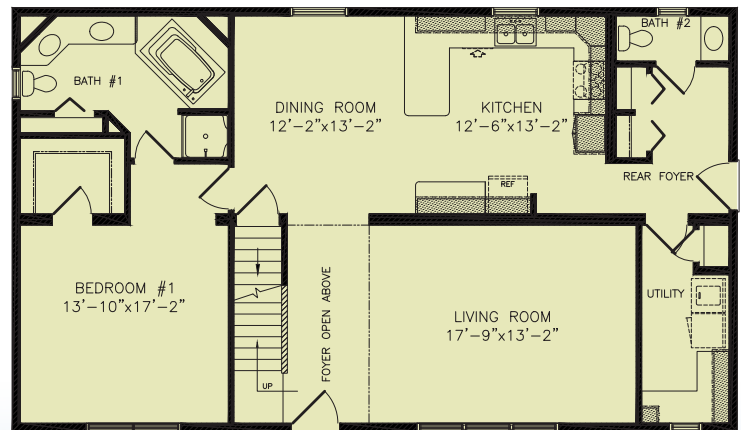
This attractive Cape Cod style home has an expansive kitchen, large snack bar and bountiful storage space. The spacious living area is very welcoming and tranquil.

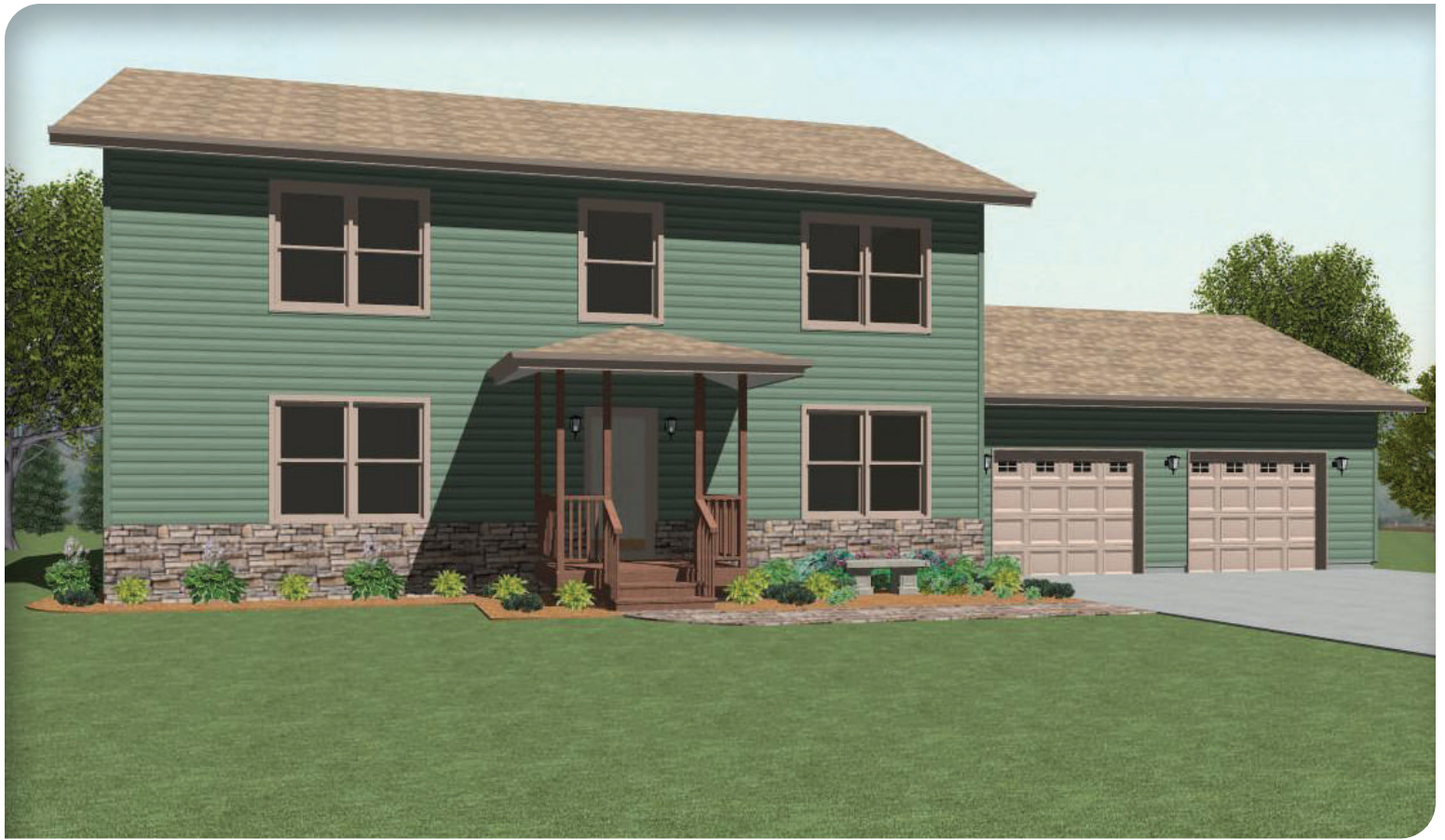
The master bedroom has a grand walk-in closet and extensive private bath. The upper level bedrooms offer plenty of closet space and a large shed dormer that allows for a roomy, full bath.



LIVABLE AREA
887 SQ FT

1344 SQ FT





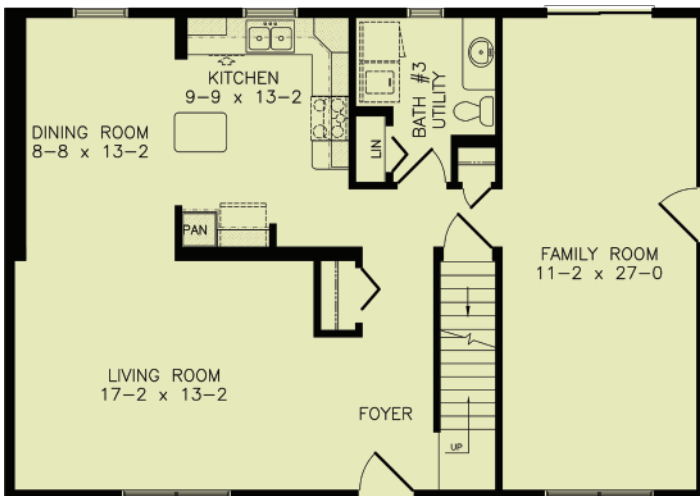
#3830

2240 SQ FT

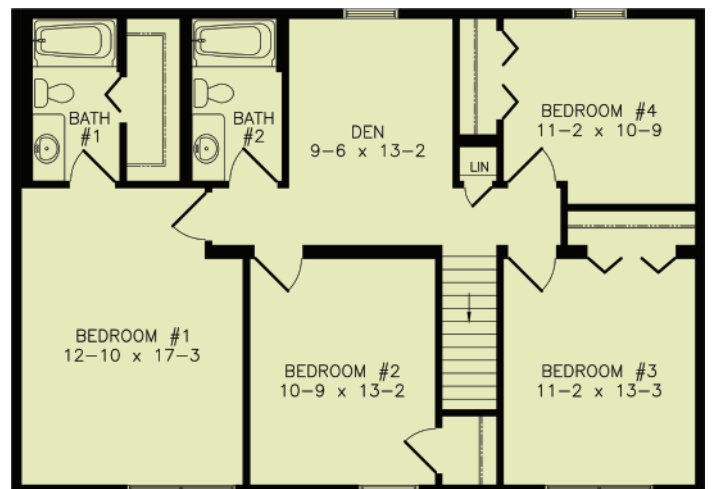
28X40 4BDRM THOMASVILLE

Experience the comfort and charm of perfectly balanced construction. An optional covered porch makes everyone feel welcome. Four upstairs bedrooms open into a versatile den. The perfect place to unwind. The master suite includes a private bath and walk-in closet. The open lower floor plan is ideal for the busy family and feature a built-in pantry.

1120 SQ FT



LIVABLE AREA
1120 SQ FT



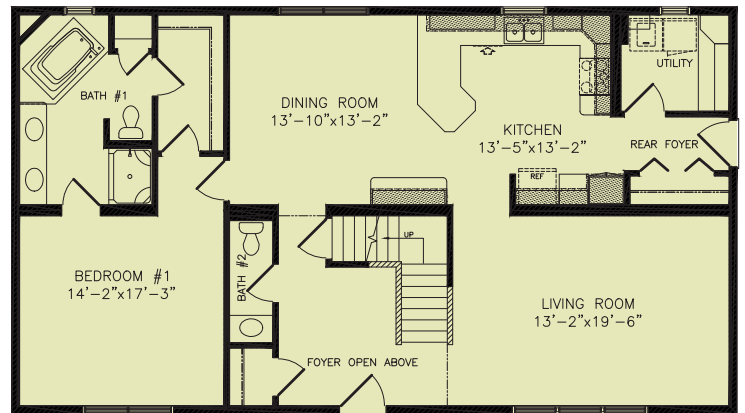


#3590

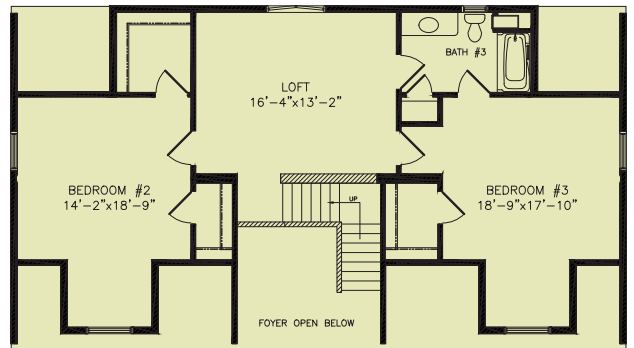
2367 SQ FT

28X50 3BDRM TELMARK

Functionality is evident in this large, elegant, three bedroom home. A large open foyer welcomes you into this home where living areas are well proportioned for any size family. There is an abundance of kitchen space for the serious chef and a convenient first floor laundry/utility room.



1400 SQ FT



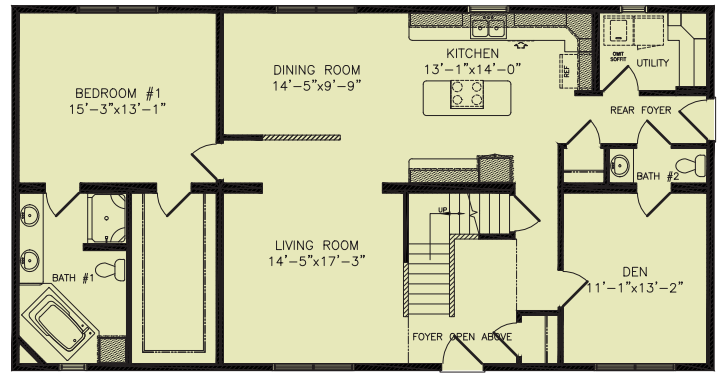
LIVABLE AREA
967 SQ FT

#3010

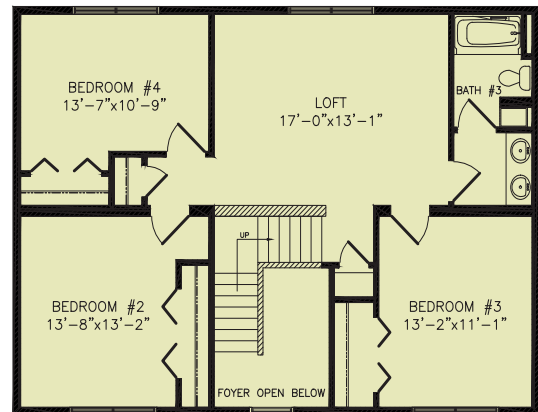
2464 SQ FT

28X54 4BDRM MAPLETON

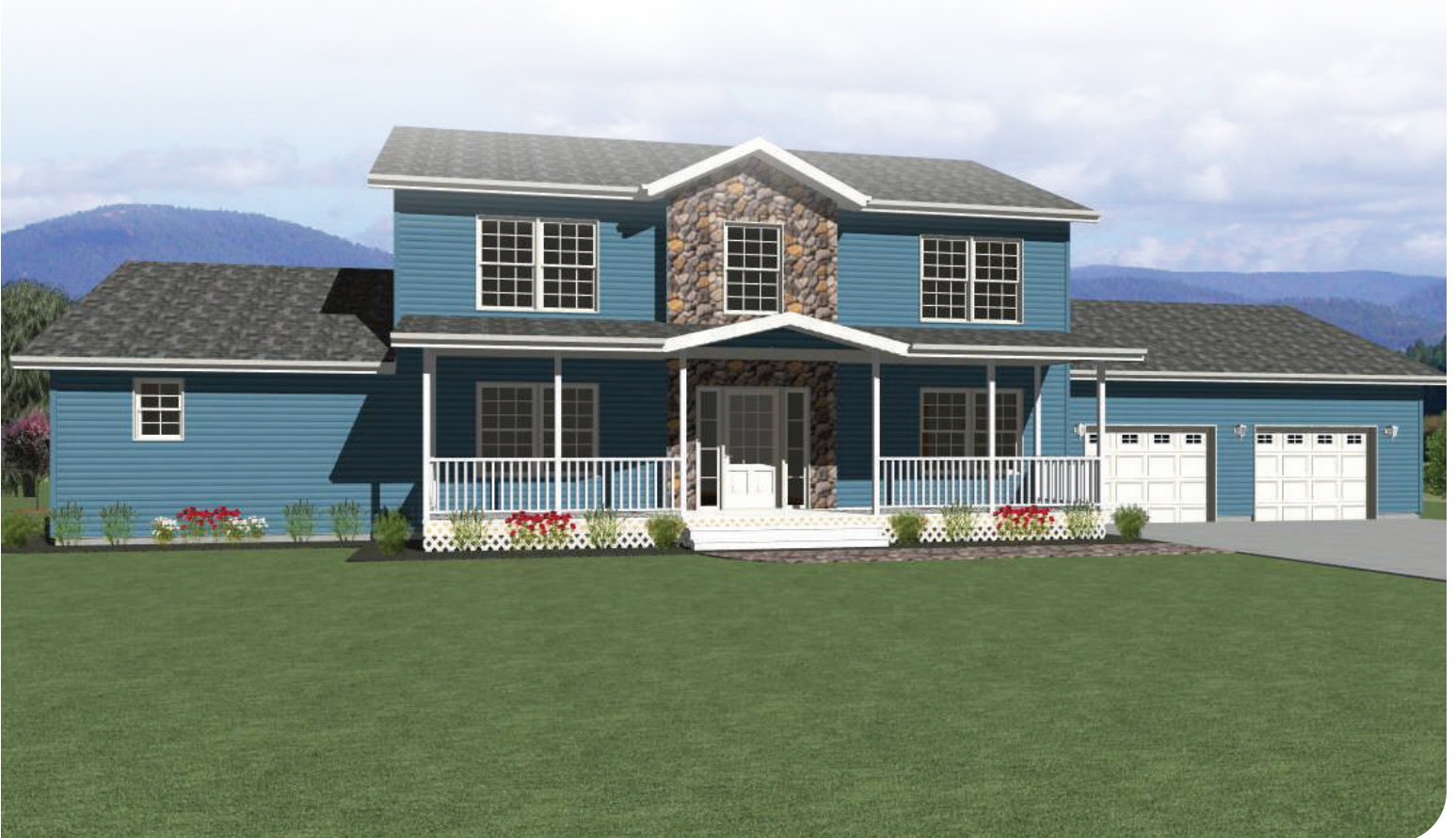
Discover the satisfaction of living in a home as versatile as it is handsome. Unwind in the secluded loft or gather in the modern kitchen adjoining living and dining areas. A full bath and utility room border two first floor bedrooms giving easy access to all. Climb the stairs to the flexible loft space, or retire to the master bedroom suite with its full bath and soaker tub. Come home to a new classic.



1512 SQ FT



LIVABLE AREA
952 SQ FT





WISCONSIN HOMES

Custom Design. Precision Built.

WISCONSIN HOMES • P.O. BOX 250 • MARSHFIELD, WI 54449 • (715) 384-2161

www.wisconsinhomesinc.com